



**THE CAMP BLANDING ROD & GUN CLUB PRESENTS:**

# **A WOUNDED WARRIOR CHARITY BASS TOURNAMENT - 02 APRIL 11**

KINGSLEY, LOWRY, MAGNOLIA LAKES and BLUE POND  
WILL BE OPEN TO THE PUBLIC ON A FIRST COME REGISTRATION  
BASIS, LIMITED TO 130 BOATS. SEEKING BOATERS WILLING TO  
PARTNER WITH A WOUNDED WARRIOR FOR THIS EVENT.

**OUR DONATION GOAL IS: \$50,000.00**

**1/2 day tournament - from safe light until 1300**

**UP TO \$4,550.00 POSSIBLE PAYOUTS**

	<u>FEES</u>	
PER BOAT ENTRY FEE	\$100.00	100% donated to the WWP
AGGREGATE WEIGHT	\$25.00	100% payout IAW Rules
BIG FISH (Per Boat)	\$10.00	100% payout IAW Rules

**Corporate sponsors are encouraged to contribute  
directly to the WWP or donate items for raffle.**

**BBQ Dinner @ \$8.00 per plate will be served after announcement of  
Tournament winners. Sponsor Raffles will begin @ 1500**

**On-post Billeting and RV Campsites are available for reservation.**

Billeting 904 682-3381 (Reservations accepted up till 01 MAR 2011) / Recreation Camping 904 682-3104 / 3517

**TOURNAMENT RULES ON BACK, REGISTRATION FORMS, MAPS, RULES, SPONSOR / DONOR  
INFORMATION, CURRENT NEWS AND CONTACT PHONE NUMBERS MAY BE FOUND ON OUR WEBSITE:**

**[www.campblandingrod-gunclub.com](http://www.campblandingrod-gunclub.com)**

## General Bass Tournament Rules

### 1. Participants and Eligibility:

There is no age limit. Persons under the age of 18 will receive prizes in lieu of money. Guides are not allowed to fish in any tournament. Participants must be in good standing with any and all local fishing clubs. And sign the liability waiver form before participating in any tournaments.

### 2. Citations:

A contestant cited by officers for violation of State or Federal fishing or boating regulations will be disqualified.

### 3. Tackle and Equipment:

All fish must be caught in a legal sporting manner. Intentional snagging of fish will not be allowed. Only artificial lures can be used. Liquid fish attractants are allowed. Only one (1) rod may be used at any one time. Other rods may be in the boat and ready for use, however, every cast and retrieve must be completed before another cast is made.

### 4. Official Boats:

Officials will be by and on the lake for boat inspections and observation during tournament hours. Each team is required to comply with all requests. Boats without proper light system cannot be in water until 15 minutes before sunrise. All boats must have flotation vests/cushions, fire extinguisher, working kill-switch to motor, first-aid kit, horn/whistle, and live-well. USCG rules apply, must wear flotation devices while on plane.

### 5. Sportsmanship:

All contestants are expected to follow high standards of sportsmanship, courtesy, safety, and conservation. Any team who displays poor sportsmanship, violates these rules or any state or local laws or brings unfavorable publicity to the sport of bass fishing will be disqualified.

### 6. Encroachment:

A "50 yard rule" is in effect at all times during competition. No contestant's boat may move within 50 yards of another contestant's boat at any time for the purpose of fishing without the consent of all contestants' involved. A boat moving from one area to another may infringe upon this zone as long as the parties that are moving do not fish and do not intentionally disrupt the area. Judging distance is very difficult on the water. As a general rule of sportsmanship all anglers should give all others enough room to make a reasonable cast to fish an area.

### 7. Alcoholic Beverages and Drugs:

At no time during tournament hours are alcoholic beverages or drugs other than prescription allowed.

### 8. Protest:

All protest must be submitted in writing before the tournament officials close the scales.

### 9. Individual Scoring:

Only black bass can be scored. Each individual may weigh in five (5) fish with NONE less than 12 inches in length, measured on a flat board, used by the weight committee, with the mouth closed and tail compressed. If anyone brings in more than five (5) bass, the largest bass will be rejected and charged a 4 oz. penalty. Tournament standings will be determined by the total weight at the competition of the tournament. Any individual weighing in a fish in less than 12" in length will be assessed an 8 oz. penalty plus the loss of the illegal fish. Each fisherman is required to leave from and return to a specified checkpoint. Any team returning to the checkpoint late will be penalized at the rate of 1 lb. per minute up to 10 minutes. After 10 minutes no weight will be allowed. No penalty for late arrival to the weigh-in for locations other than Kingsley Lake due to loading / driving time.

### 10. Big Bass Contest:

Based on the heaviest weight of any single bass caught. If two contestants have the same weight at the end of the tournament, the contestant with the largest bass will be the winner.

### 11. Team Scoring:

Each team considers two anglers combination of seven (7) bass total on a single day tournament. Standings will be determined by the total weight.

### 12. Rankings:

The rankings will be based on total weight. If two contestants have the same weight at the end of the tournament the prize will be split. Cash and Prizes will be determined at tournament based on number of entries and sponsors.

**13. Prizes:** From the total entry fees collected (\$125.00 each boat), \$100.00 will be donated to the Wounded Warrior Project and \$25.00 will be 100% payout as follows: 25% to total aggregate winner on each lake: Big Bass Pot will be an additional **\$10.00 per boat** for those who wish to participate. Assuming the 130 Boater limit is reached with 2 anglers per boat, the Camp Blanding Rod & Gun Club will donate a total of \$13,000.00 to the Wounded Warrior Project; and pay out in prize monies a total of **\$812.50 to the 1<sup>st</sup> place total aggregate winner for each lake/pond fished:** and as much as **\$1,300.00 to the Big Bass Pot.**

The event chairman (as designated by the Camp Blanding Rod & Gun Club Board of Directors) reserves the rights to change or modify any rules/programs. Any changes would be announced at the Captain's meeting prior to the tournament.

**A CAPTAINS MEETING WILL BE SCHEDULED PRIOR TO TOURNAMENT. TIME AND PLACE WILL BE ANNOUNCED ON THE CBR&G WEBSITE. [www.campblandingrod-gunclub.com](http://www.campblandingrod-gunclub.com)**

# WOUNDED WARRIORS CHARITY BASS TOURNAMENT REGISTRATION

BOATER NAME: \_\_\_\_\_ NON-BOATER NAME: \_\_\_\_\_

MAILING ADDRESS: \_\_\_\_\_

E-MAIL ADDRESS: \_\_\_\_\_

PHONE : (home) \_\_\_\_\_ (cell ) \_\_\_\_\_

I WILL PARTICIPATE IN THE APRIL 2, 2011 WWP CHARITY BASS TOURNAMENT. I AGREE TO ABIDE BY THE TOURNAMENT RULES AS READ ON TOURNAMENT FLIER AND CONDUCT MYSELF IN ACCORDANCE WITH CAMP BLANDING JOINT TRAINING CENTER AND CAMP BLANDING ROD & GUN CLUB RULES AND REGULATIONS.

I UNDERSTAND THAT MY LAKE SELECTION DEPENDS SOLELY UPON THE PRIORITY I CHOOSE AND THE DATE MY REGISTRATION IS RECEIVED ALONG WITH FULL PAYMENT OF TOURNAMENT FEES OF \$125.00 PER BOAT. I UNDERSTAND THAT \$100.00 WILL BE DONATED TO THE WOUNDED WARRIORS PROJECT AND \$25.00 WILL BE PAID OUT TO THE WINNING CATCHES AS SPECIFIED IN THE TOURNAMENT RULES. AN ADDITIONAL \$10.00 PER BOAT (OPTIONAL PARTICIPATION) IS OPEN FOR BIG FISH POT WHICH WILL BE AWARDED FOR THE LARGEST BASS. TOURNAMENT WILL BEGIN AT SAFE LIGHT UNTIL 1300 HRS ( 1:00 ) WEIGH-IN WILL BE OPEN @ 1000 HRS ( 10:00 ) UNTIL COMPLETED.

I AM A BOATER AND WILLING TO PARTNER WITH A WOUNDED WARRIOR AS MY NON BOATER .  
(signature ) \_\_\_\_\_

LAKE CHOICE #1 \_\_\_\_\_ #2 \_\_\_\_\_ #3 \_\_\_\_\_ #4 \_\_\_\_\_

ENTRY FEE \$125.00 \_\_\_\_\_

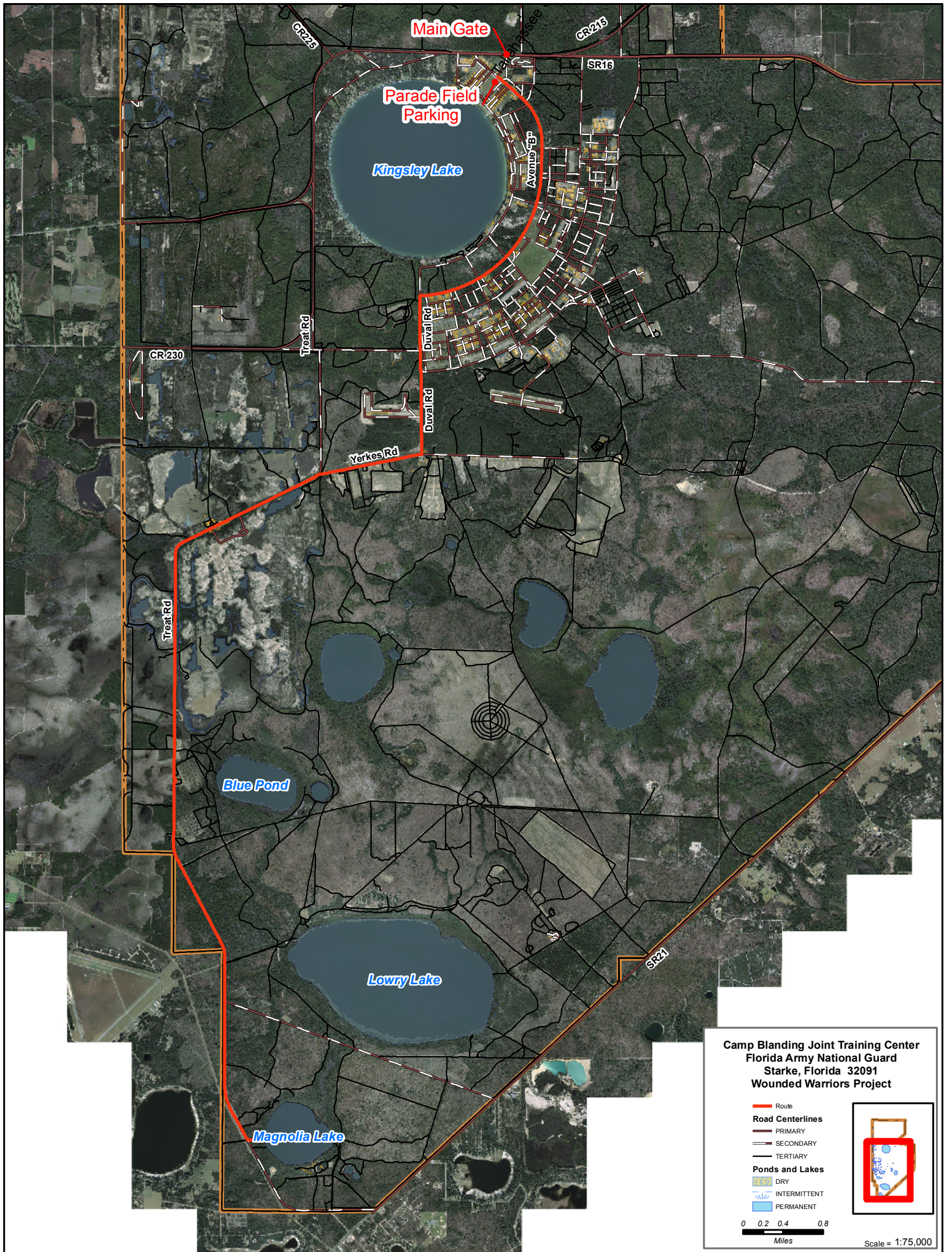
BIG BASS \$10.00 \_\_\_\_\_

# OF BBQ PLATES \_\_\_\_\_ (\$8.00 PER PLATE, SERVED AFTER TOURNAMENT CONCLUDES)

TOTAL AMOUNT PAID \_\_\_\_\_ CHECK # \_\_\_\_\_

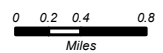
CONTACT : WENDELL HAND @ 904-424-5294: [creekcitter@comcast.net](mailto:creekcitter@comcast.net) for any questions or concerns

## Tournament registrations and fees will be accepted until MARCH 28, 2011



**Camp Blanding Joint Training Center  
 Florida Army National Guard  
 Starke, Florida 32091  
 Wounded Warriors Project**

- Route
- Road Centerlines**
- PRIMARY
- SECONDARY
- TERTIARY
- Ponds and Lakes**
- DRY
- INTERMITTENT
- PERMANENT



Scale = 1:75,000